

Xcelion™ Quick Start Kit

Quick start user kit for easy evaluation and integration of Saft's Xcelion 6T™ battery

Saft's Quick Start Kit allows for seamless, out-of-the-box lab performance evaluation and cycling of the Xcelion 6T™ battery. The Quick Start Kit includes an interface box and a USB memory stick loaded with important reference documentation, drivers, and PC software used for battery monitoring, datalogging, and reprogramming.

Key features

- Built-in CAN adaptor compatible with Windows PC USB interface; drivers available online
- Input and output connectors enable use during vehicle testing/evaluation/integration, allowing the GUI to datalog while in "snoop" mode
- Graphical User Interface (GUI) provides visual battery status including state-of-charge, state-of-health, voltage, current, and other diagnostic information
- Whether commanding the battery or simply monitoring an integration and test activity, the GUI application supports logging battery data on a PC to support troubleshooting and interface evaluation
- Interface box includes switches to operate the Xcelion 6T™ battery for any of seven CAN addresses
- Enables communication with Xcelion 6T™ over J1939 CAN Bus

Benefits

- Accelerates vehicle/battery integration
- Simplifies trouble-shooting and evaluation of the Xcelion 6T™ battery
- Saves time and resources by providing a convenient interface tool set
- Allows for simple enabling and disabling of the Xcelion 6T™ battery

Saft America, Inc.

Space & Defense Division

107 Beaver Ct.

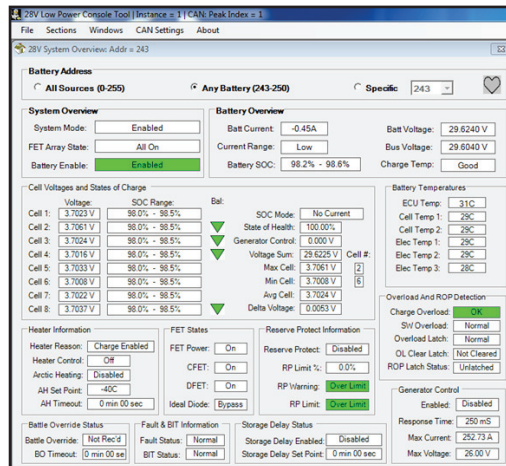
Cockeysville, MD 21030

Tel.: +1 410-771-3200

Fax: +1 410-771-1144

Email: SaftDefenceUS@saftbatteries.com

www.saftbatteries.com



Physical characteristics

Length	4.2 in
Width	6.5 in
Height	2.5 in

Resources included

- Users manual
- Reprogramming tools
- Interface design description
- Graphical user interface

References

Saft part number	208604
------------------	--------

Benefits (cont.)

- Enables data logging of the battery voltage, current, temperature, and Built-In-Test (BIT) status
- Allows a quick and detailed check of any Saft Xcelion 6T™ battery
- Offered as a COTS solution

Applications

- For use with Saft's Xcelion 6T™ battery
- Initial evaluation
- Supports integration into a vehicle or other smart system
- Valuable in any battery shop handling Saft Xcelion 6T™ batteries

Saft SAS

Space & Defense Division

Rue Georges Leclanché

86000, Poitiers

Tel.: +33 (0) 549 551 866

Fax: ++33 (0) 549 554 780

www.saftbatteries.com

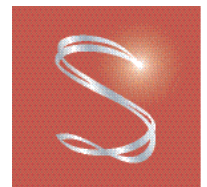
Doc N° 54094-0715-2

Edition: July 2015

Information in this document is subject to change without notice and becomes contractual only after written confirmation by Saft.

Published by the Communications Department

Photo credit: Saft



SAFT